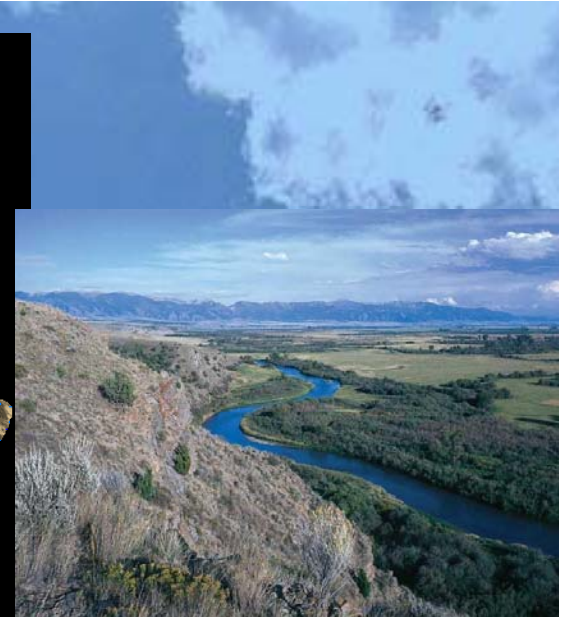
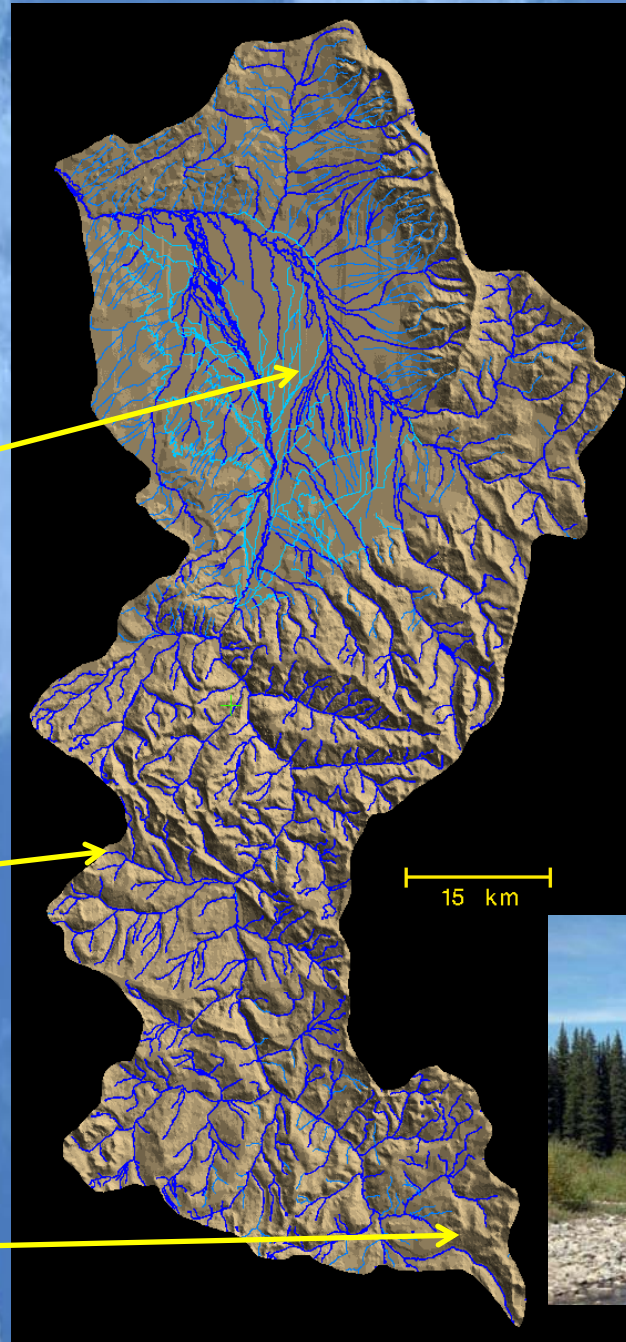


Gallatin Watershed

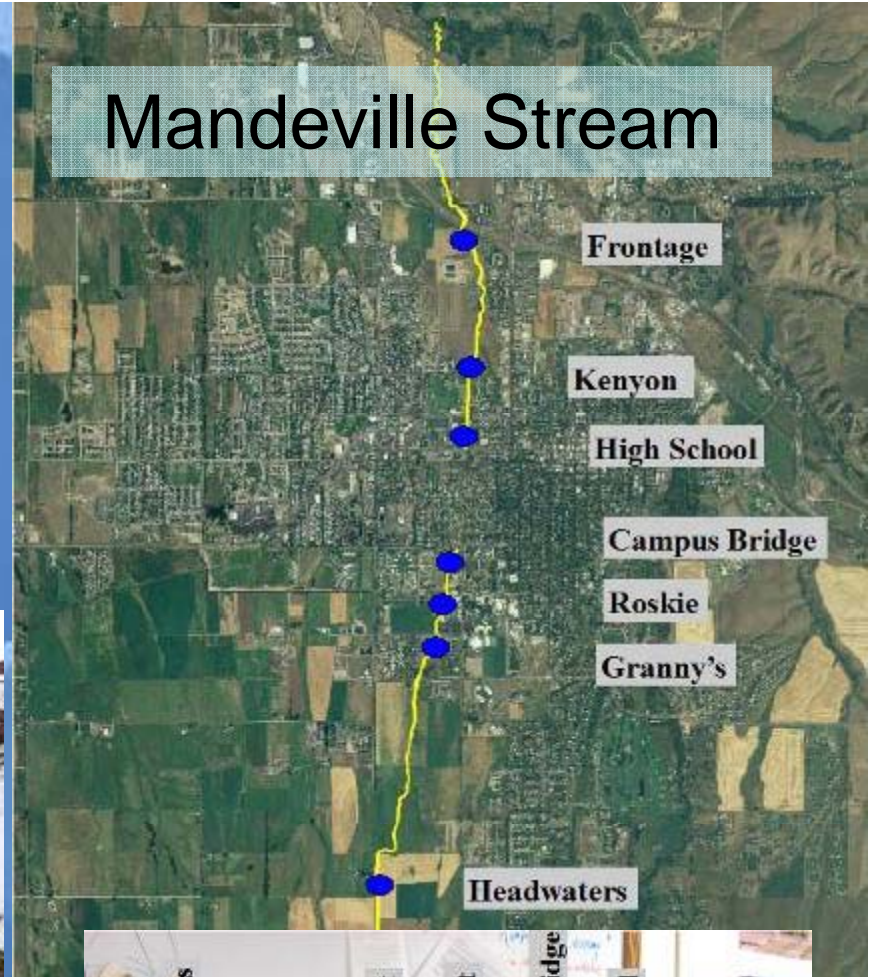
City of Bozeman & Gallatin Valley

Big Sky Ski Area

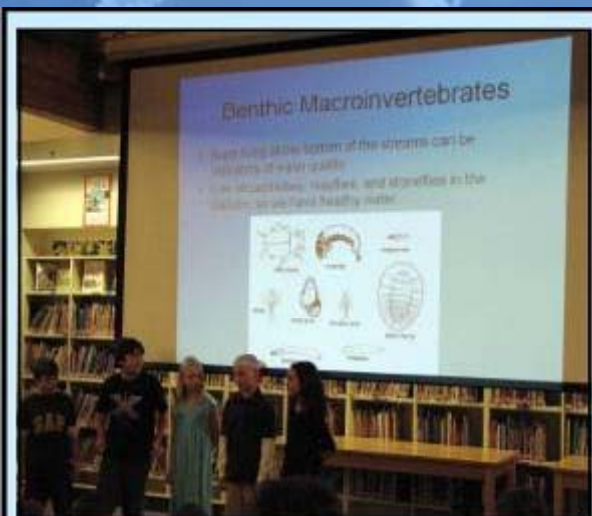
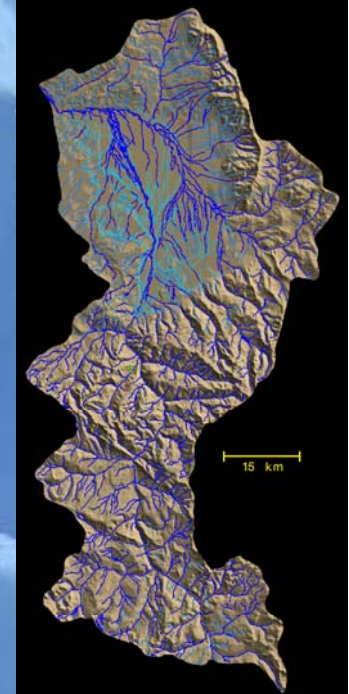
Yellowstone National Park



Education Based Monitoring



Education Based Monitoring



BWTF 2009 Annual Meeting: February 19, BWTF held its annual meeting at the Big Sky Community Library. Above, Ophir 4th grade students reveal results of their stream study on the Gallatin River.



Management Based Monitoring

Lower Gallatin TMDL Planning Area Impaired Waterbodies

QUALITY ASSURANCE PROJECT PLAN

GREATER GALLATIN WATERSHED COUNCIL
VOLUNTARY STREAM MONITORING PROGRAM:
GALLATIN STREAM TEAM

Prepared by

Tommy Crane
Water Quality Specialist
Gallatin Local Water Quality District

July 8, 2008

Revised June 12, 2008 (REV'01-2009)

Prepared for

Greater Gallatin Watershed Council, Inc.
P.O. Box 751
Borvenan, MT 59711-0751

Approvals: (All signatures on file, MDEQ/WQPB QA Program)

Shirley Henderson-Isomais, Coordinator & Program Manager
Greater Gallatin Watershed Council, Inc.

Date

Tommy Crane, GGLWC QA Office
Water Quality Specialist, Gallatin Local Water Quality District

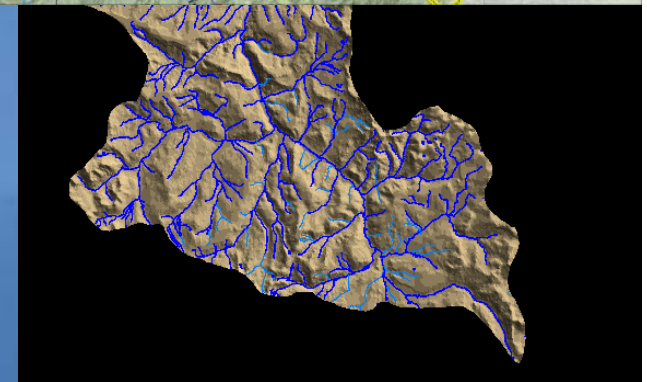
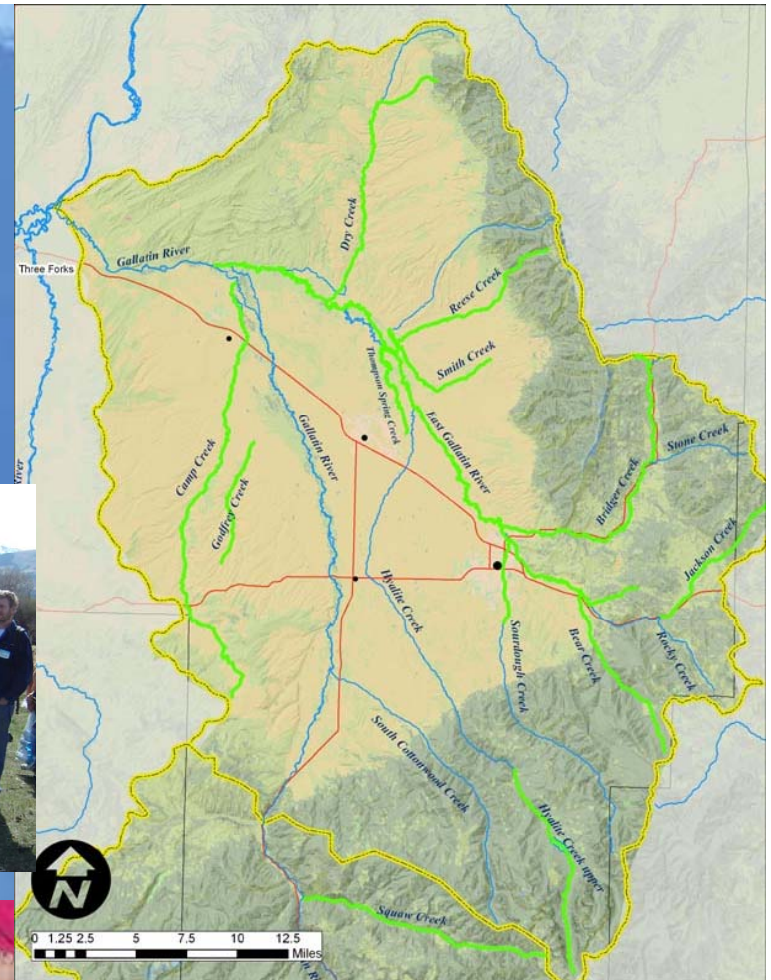
Date

Pat Schaefer, Stream Water Quality Planner
Montana Department of Environmental Quality

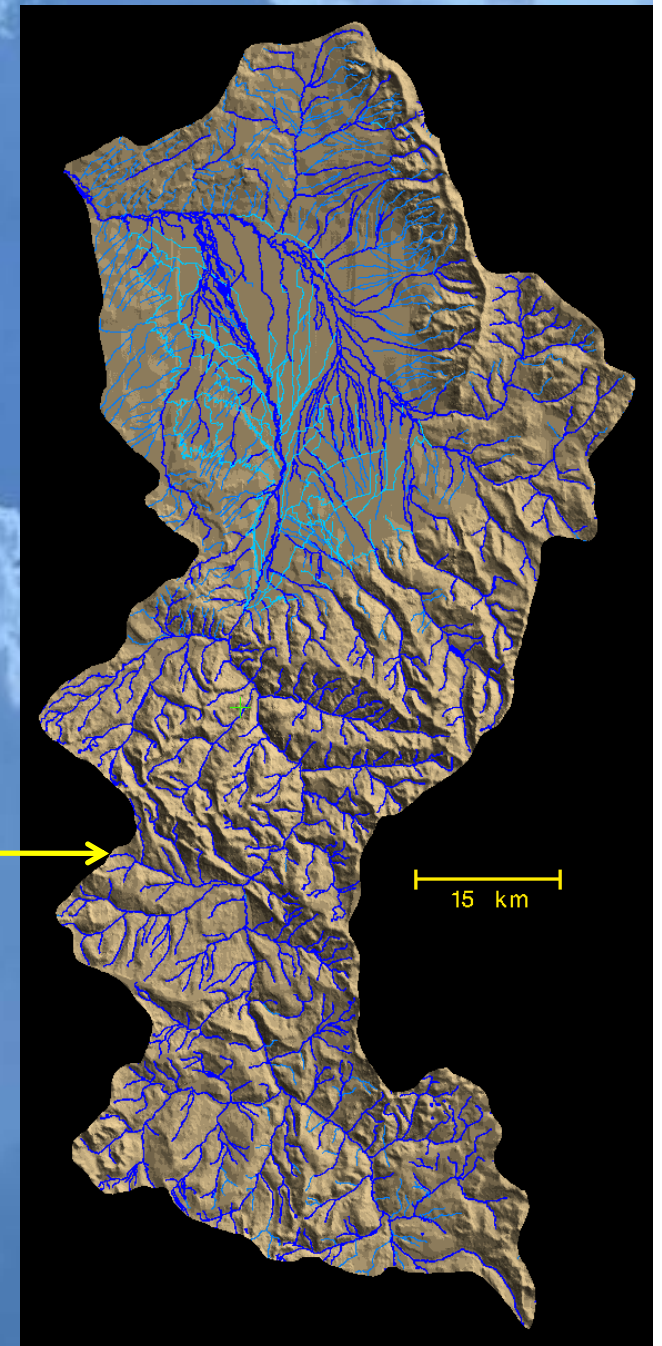
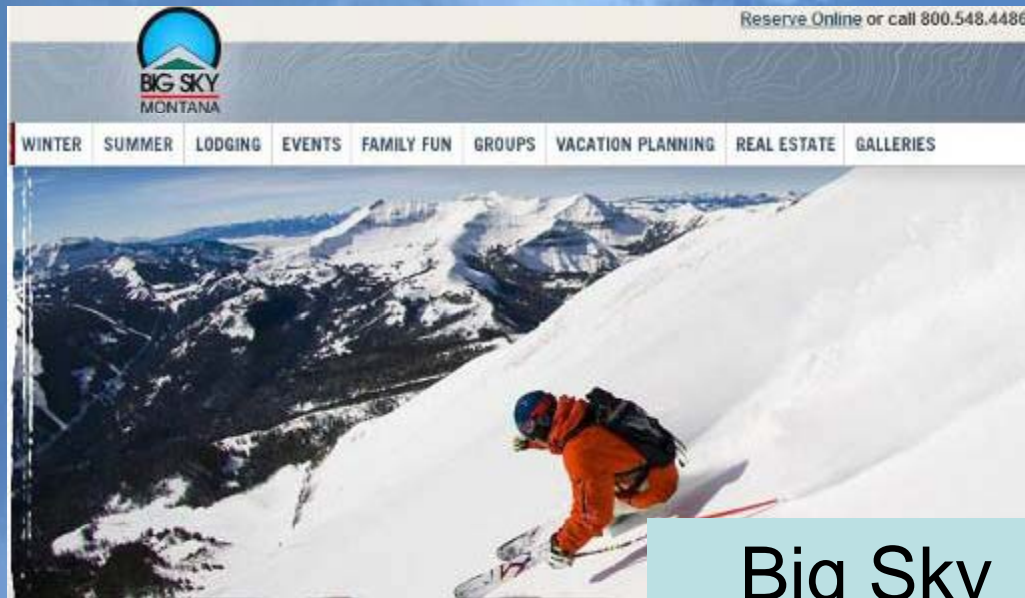
Date

Mark Hootson, QA Office
Montana Department of Environmental Quality

Date

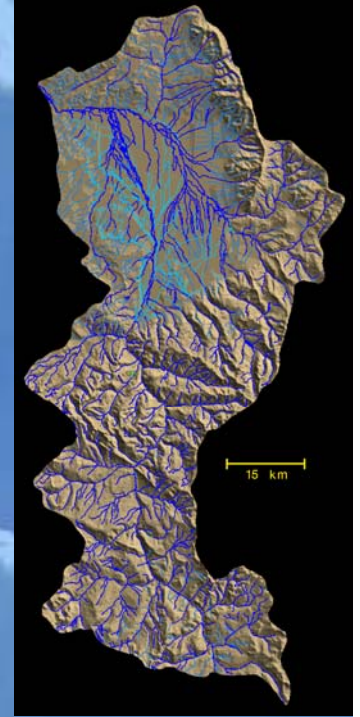
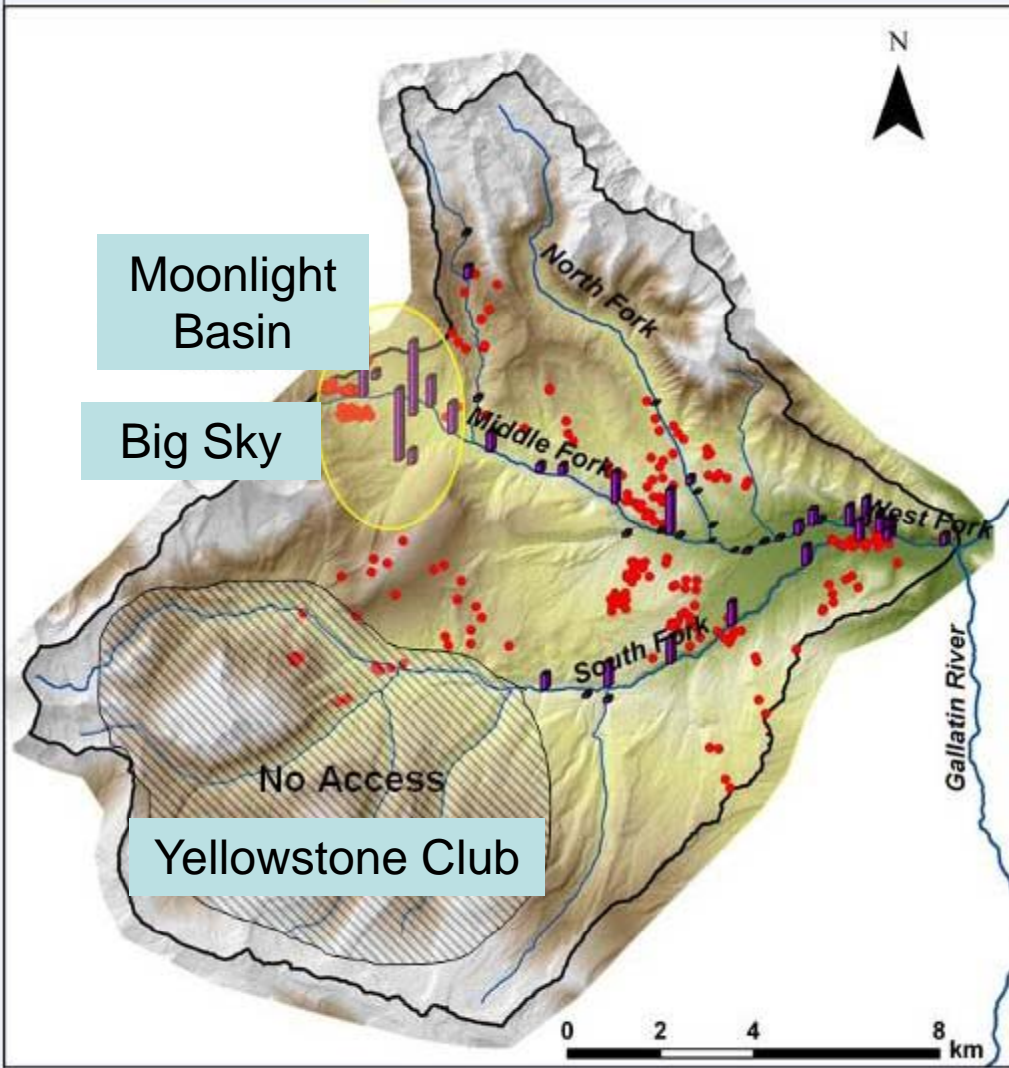


Research Based Monitoring



Research Based Monitoring

August 2007



MSU Watershed Hydrology Group